

User Guide



AUGmentecture

AUGmentecture allows architects, engineers, and design professionals to display their 3D models in augmented reality on mobile devices and share them with colleagues and customers.

How to Display 3D Models in Augmented Reality with AUGmentecture

AUGmentecture is a marker-based augmented reality platform for mobile devices. What does that mean? Well, it all starts with 3D objects (in this case, architectural models) in the cloud. Without them, there is nothing to display.

Uploading Models

To build a collection of 3D models that you can display in AR, create an AUGmentecture account on our [website](#).

AUGmentecture

[Home](#) [Product](#) [Pricing](#) [Contact](#) [Founders](#) [Log in](#)

augmented reality for
design collaboration

9514

users

14287

models

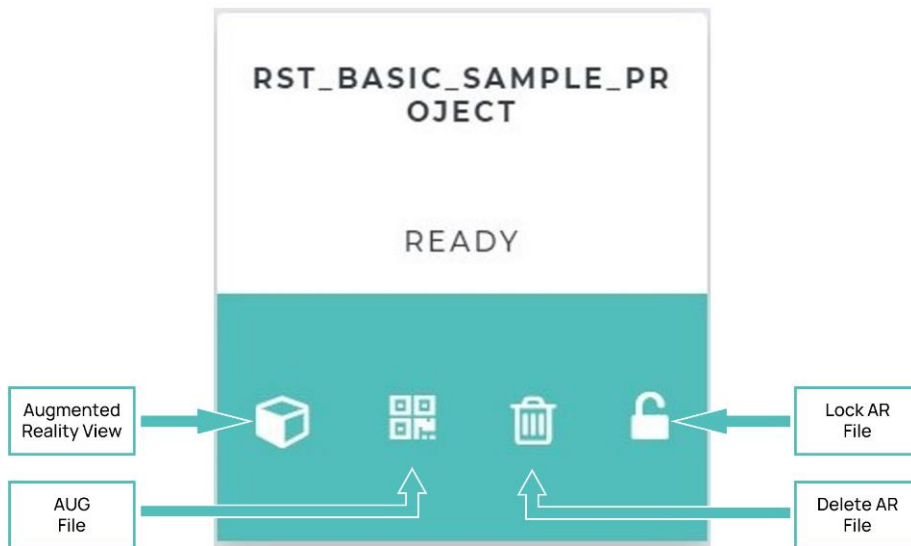
66278

views

AUGmentecture is an augmented reality platform for design collaboration that enables the viewing of 3D models in AR format. Architects, engineers, and design professionals are using the AUGmentecture platform to display their 3D models in augmented reality on mobile devices and share them with colleagues and



Your account comes with a personal and secure panel and a 3D viewer to load and organize your models, where you can also lock the model with a password only for those who have it to view.



Once your account is set up, you can start sending templates to your account. Remember that AUGmentecture uses the .fbx or .obj file format, so your templates will first have to be exported to .fbx or .obj files.


If you use Autodesk® Revit®, or Sketchup®, install the free AUGmentecture plugin to export templates directly to your Revit® or Sketchup® account. You can download the plugin [here](#).

AUTODESK APP STORE English

Forum Sign In

Go to: Select Product Store Search Apps Revit Show All

Revit - Item Detail



AUGmentecture
AUGmentecture
★★★★★ (9 reviews)

OS: Windows
Language: English

[Tweet](#)

Description

AUGmentecture is a service helping you to view complex 3D models on a mobile device in an Augmented Reality(AR) format. With the help of AUGmentecture plugin, you can seamlessly and securely upload your 3D models and floor plans directly from Autodesk® Revit® to your AUG account to view them later with your mobile device. You just need to select the model in 3D view and optionally select floor plan and you will be able to see the model on your mobile device mapped on your floor plan.

AUGmentecture's goal is to make augmented reality a day to day design communication and collaboration tool for architects, designers, and artists.

You can download the AUGmentecture app for your iPhone from [here](#). Or for your Android Phone from [here](#).

Trial Description

The plugin is free itself. But you need to create an account on our [website](#) in order to use this plugin.

[Read Help Document](#)

About This Version

Version 3.2.0, 7/2/2020

Trial

[Download](#)

[Add to Wishlist](#)

Download Size: 5.7 MB

Release Date: 2/28/2017

Last Updated: 7/2/2020

Version Info: 3.2.0


Website: <http://augmentecture.com>

Cust. Support: development@augmentecture.com

Compatible with:

Autodesk Revit
Version: 2021, 2020, 2019, 2018

Publisher Information

 **AUGmentecture**
1 App

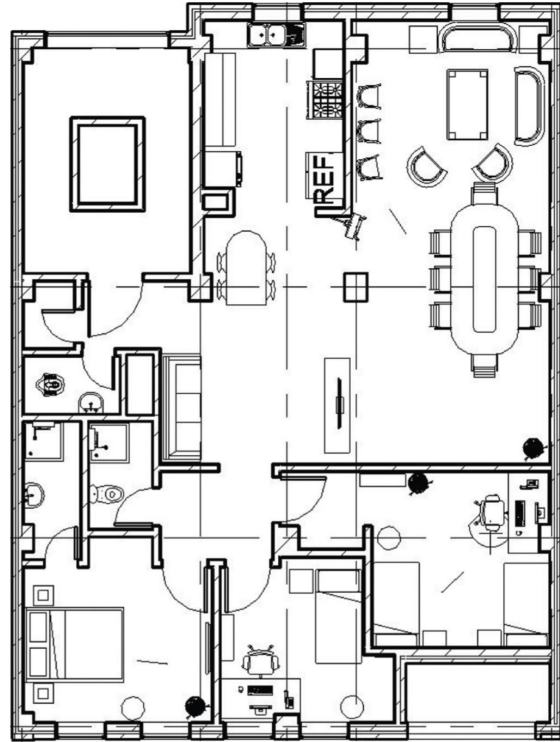
Each of your models will have a code and a marker assigned to it.

AUGmentecture

SAMPLE 3D MODEL

HOW TO VIEW THE 3D MODEL IN AR:

1. LAUNCH THE FREE AUGmentecture APP, AND PRESS "Scan a new model".
2. POINT THE DEVICE AT THE **QR CODE** TO DOWNLOAD AND CONSTRUCT MODEL.
3. POINT THE DEVICE AT THE **BLUEPRINT** TO VIEW 3D MODEL IN AR.



The default marker is the blueprint of the template, but you can also assign another image, such as your company logo, for example, to act as a marker. The platform has the form of surface mode visualization, where it is possible to view the AR on any flat surface, without the need to use a marker.

Viewing Models in AR

Once a model has been uploaded to the cloud, the next step is to view them on mobile devices.



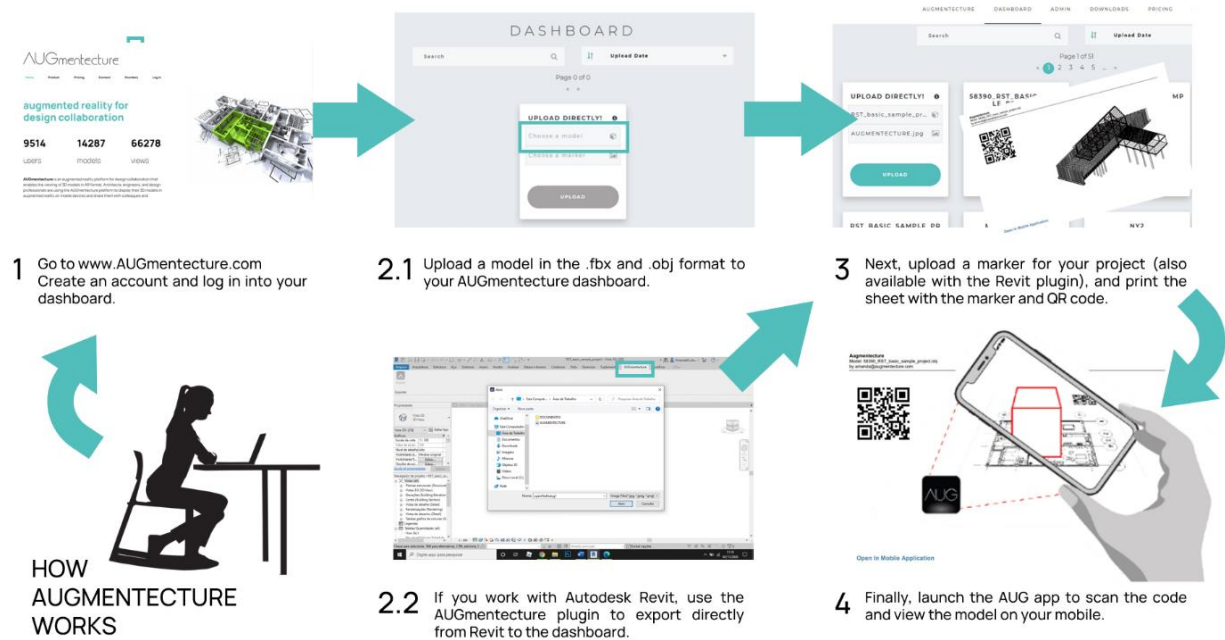
Figure 2M

To view a model, download the AUGmentecture app to your device from the [App Store](#) or [Google Play](#).

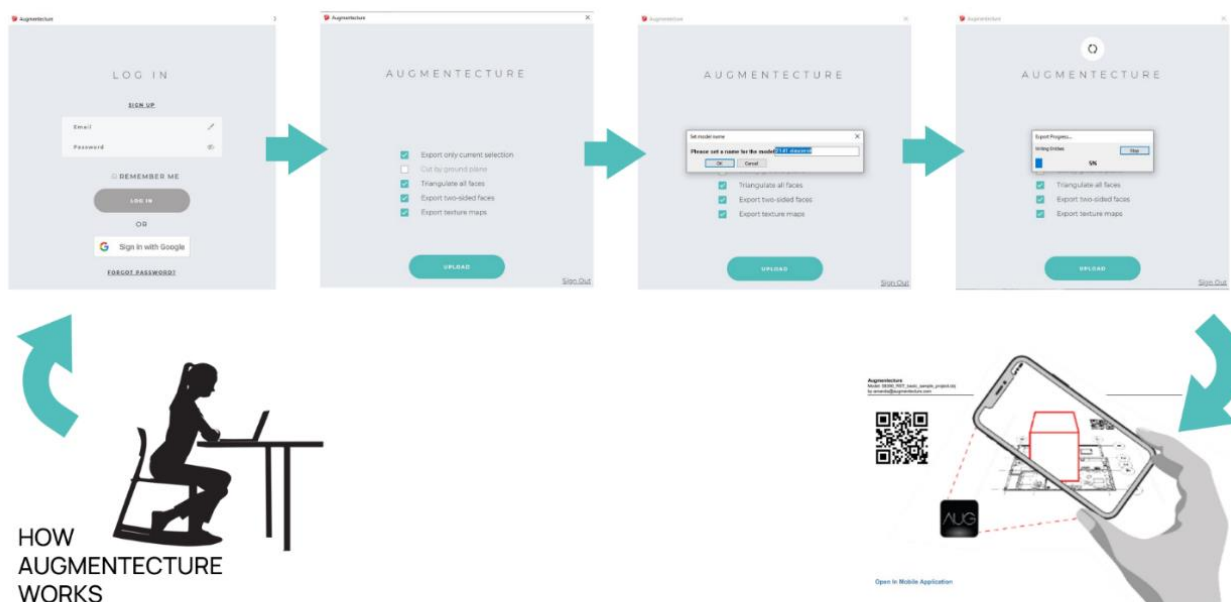
By activating the app, you can then scan the QR code through the app and view the augmented reality on a 1:1, 1:10, 1:100 scale. Once model appears, it can be saved in an exclusive AUGmentecture folder on your smartphone or tablet, make vertical or horizontal cuts, pinch zoom and fit the model on the z axis.

When you start the app, it will ask you to point the camera at the QR code. The application will use the QR code to identify which model to download. Once the model is downloaded, you will have two options to view with the marker, where it is necessary to print it or have the surface view.

Here is the unique Revit workflow of AUG:



Here is the unique Sketchup workflow of AUG:



Welcome to augmented reality and welcome to AUG!